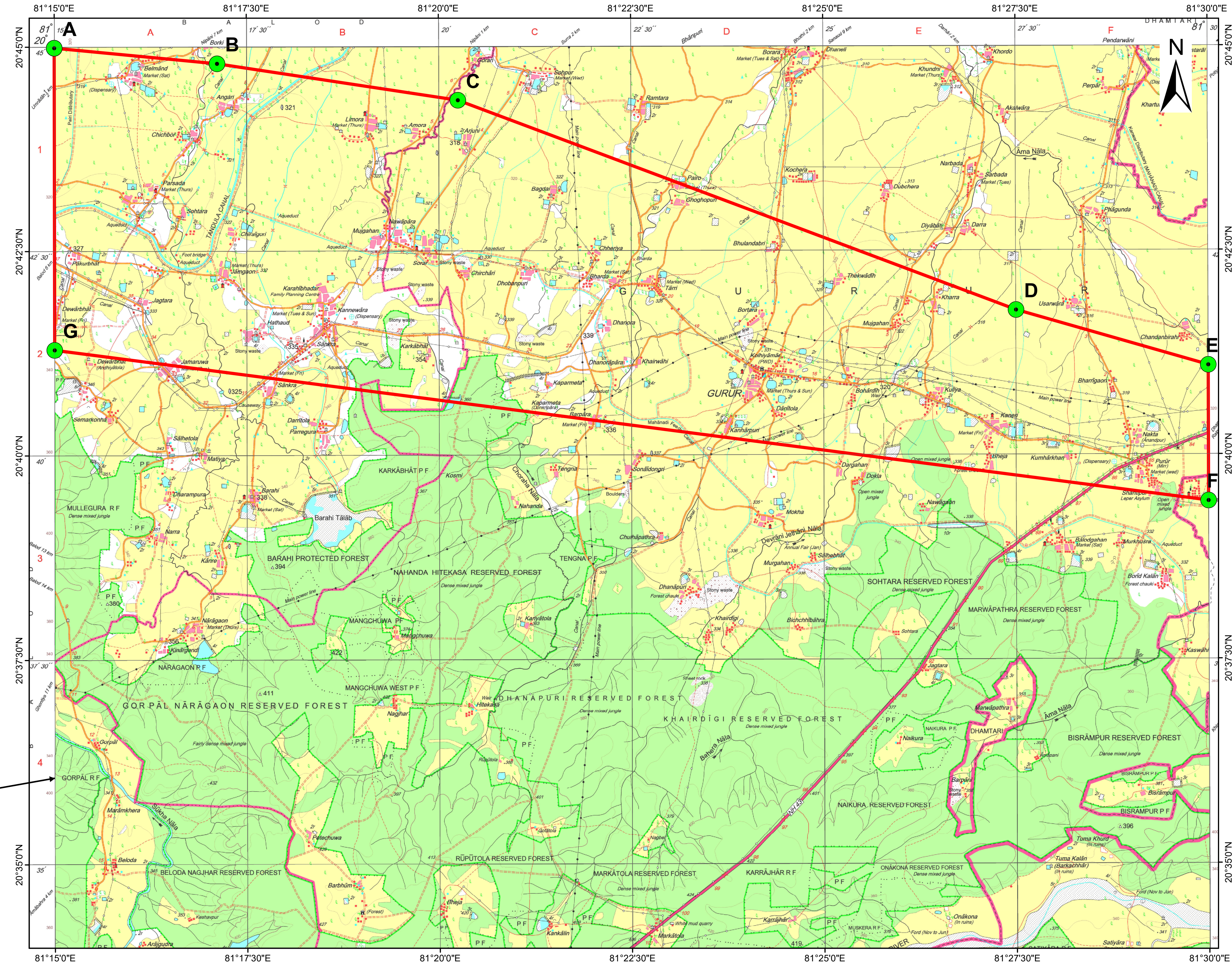


Legend

Cardinal Points

Parsada-Nawapara-Gurur G4 Block



Co-ordinate of Cardinal Point of Parsada-Nawapara-Gurur G-4 Block for Glauconite District: Balod, Chhattisgarh					
Cardinal Point	UTM Zone 44N (m)		DD° MM' SS"		Area (Sq. Km)
	Easting	Northing	Latitude	Longitude	
A	526025.3173	2294477.70	20° 44' 59.276" N	81° 15' 0.000" E	144
B	529697.9134	2294129.72	20° 44' 47.758" N	81° 17' 6.982" E	
C	535133.6888	2293304.52	20° 44' 20.575" N	81° 20' 14.895" E	
D	547734.8914	2288583.86	20° 41' 46.011" N	81° 27' 30.163" E	
E	552073.1969	2287347.84	20° 41' 5.389" N	81° 30' 0.000" E	
F	552082.6253	2284290.31	20° 39' 25.931" N	81° 30' 0.000" E	
G	526035.8366	2287663.51	20° 41' 17.616" N	81° 15' 0.000" E	

1:50,000

1.50.75001.534.56

Kilometers

MECL

MINERAL EXPLORATION AND CONSULTANCY LIMITED
(Formerly Mineral Exploration Corporation Limited)

LOCATION MAP

(Part of Survey of India Toposheet No. 64H06)

PARSADA NAWAPARA GURUR G-4 BLOCK,
(EXTENT 144.00 sq km)

DISTRICT- BALOD, STATE: CHHATTISGARH.

Processed at: NON-COAL GR CELL, MECL, Nagpur

MECL/EXPL./SEPT-2025

PLATE NO.- I

01